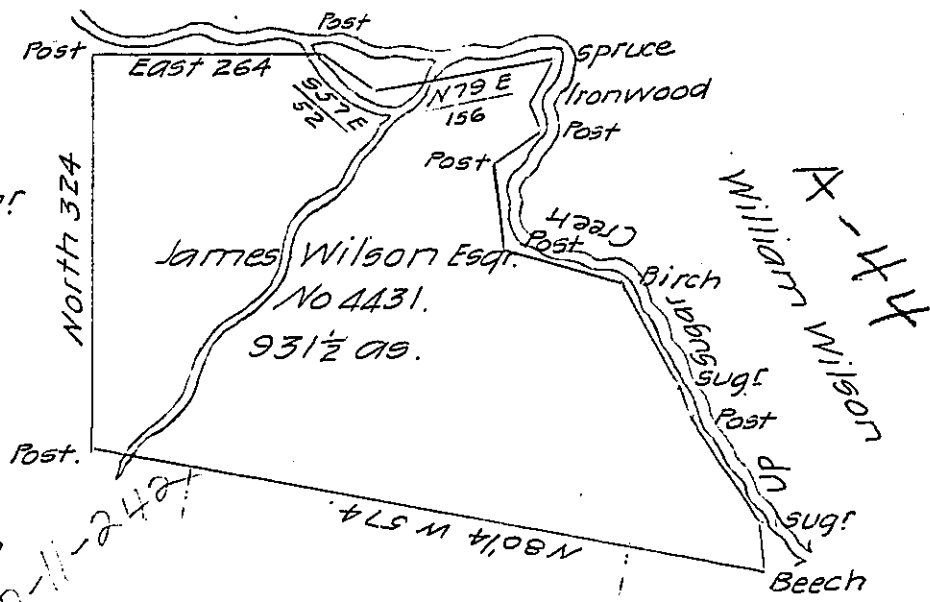


C-12-69

John Byard

James Wilson Esqr.

D-11-227



William Wilson A-44

Cour. & distance down the Creek from the last spruce

- S. 27. W. 44. ✓
- S. 20 E 24 ✓
- ✓ S. 56 W. 48 ✓
- S. 10. E. 60 ✓
- S. 71. E. 106 ✓
- S. 28. E. 96 ✓
- S. 17. E. 24 ✓
- S. 35. E. 112 ✓
- S. 7. E. 42 ✓

James Wilson Esqr.

Pg. 224

Surveyed the above described tract of land on the 17th day of the 12th mo. 1794 for James Wilson Esqr. in pursuance of his warrant No. 4431 dated ~~Oct 7th~~ <sup>Decr 11th</sup> 1793, situate on Sugar Creek adjoining his other land containing nine hundred & thirty one & 1/2 acres & the allowance of Six P. Cent.

William Ellis D.S.

Daniel Brodhead Esqr.

Surveyor General.

IN TESTIMONY that the above is a copy of the original remaining on file in the Department of Internal Affairs of Pennsylvania, made conformably to an Act of Assembly approved the 16th day of February 1833, I have hereunto set my hand and caused the Seal of said Department to be affixed at Harrisburg, this twenty-first day of August 1907

*Henry Howard*  
Secretary of Internal Affairs.